

## MEETINGS

Meetings are held twice per term. This is your opportunity to be informed about school news and events, as well as, discuss the topics that are important to you.

Our Annual General Meeting (AGM) is held in March. At this meeting, members can vote to fill the core roles on our committee. The core P&C Committee is made up of a group of elected members. These elected positions include a President, Vice President, Secretary, Treasurer and a number of executive members. According to the Western Australia Council of State School Organisations (WACSSO) Constitution, these roles must be filled in order for our P&C to function.

## SO WHAT DOES THE P&C DO?

### THE UNIFORM SHOP

The P&C runs the uniform shop for both schools out of the Community Room. New jade green polo shirts and black fleece jackets are available to purchase, as well as, second hand items.

The Community Room is located in the undercover area and is open Tuesday and Thursday afternoons from 2:45-3:15pm.

### BREAKFAST CLUB

The P&C oversees the Breakfast Club which is open mornings during the school year. The food is predominantly supplied by Food Bank but the P&C helps to secure additional donations for this service. Breakfast Club is offered to all our students for free!



## FUNDRAISING

For the past two years, the P&C have held fundraisers to replace the playground on the school oval. Previous to this, we have purchased Reading Eggs subscriptions, K/PP area play equipment, a floor rug for the library reading corner and have contributed to the costs of other programs like the Senior School Camp and EDU-DANCE.

The events that we have run include: raffles, bake sales, sausage sizzles, colour fun runs, a slime fun run, Mother's & Father's Day stalls, Christmas stalls, flea markets, Halloween discos, book fairs and special lunch order days. We have also had stalls at Cooby Fest 2 years in a row.

### THE SCOLASTICS BOOK CLUB

Catalogues are sent home every term, so if your child orders books through school, we get points to spend on new books for the library!

### GILBERTS FRESH SOS PROGRAM

We are part of the Hilton Gilbert's Fresh SOS Program, register in store and we get 1% of the money you spend donated back to the school!

### CONTAINERS FOR CHANGE

You will find big blue Containers for Change recycling bins next to the front gate to our school. These are emptied by the Scouts but the school gets 10c for every container you recycle with us.



# HOW YOU CAN HELP!

Many hands make light work! The more parents that are members of the P&C, the more we can share ideas and tasks. **Team work makes the dream work!** The more people that collaborate, the more events we can run.

- Maybe you are really good at social media posts and you could manage that area?
- Maybe you are really good at calling people to ask for donations- just one or two calls a week?
- Maybe you are an administration wizard and you like writing letters or could put together our news for the school newsletter?
- Maybe you have a head for numbers and want to help with the financials or uniform shop?
- Maybe you are available to pick some donations up throughout the year?
- Or maybe, just maybe, you are an events coordinator and want to help out at discos or squirting children with coloured powder at the fun run!

.....

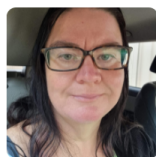
## EXECUTIVE COMMITTEE 2022/23



**PRESIDENT**  
Lisa Appleby



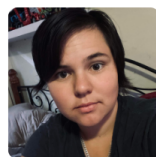
**VICE PRESIDENT**  
Jane Burnett



**EXECUTIVE MEMBER**  
Shiloh Smith-Ince



**EXECUTIVE MEMBER**  
Tarnya Irving



**EXECUTIVE MEMBER**  
Mikalah Hall



**SECRETARY & COMMUNITY REPRESENTATIVE**  
Pip Brennan



**TREASURER**  
Maria Maddalena



**EXECUTIVE MEMBER & BOOK CLUB COORDINATOR**  
Candice Yappo

### GET IN TOUCH WITH US....

**Lisa Appleby** 0406 635 329  
**Jane Burnett** 0402 245 889



Coolbellup Community School  
& Learning Centre P&C

[coolbelluppc@outlook.com](mailto:coolbelluppc@outlook.com)



**Coolbellup  
Schools' P&C**  
Learning For Life



# COOLBELLUP COMMUNITY SCHOOL & COOLBELLUP LEARNING CENTRE PARENTS & CITIZENS ASSOCIATION 2022

There are two schools located on our campus at 15 Waverley Road, Coolbellup but our P&C is combined, working to support both the Coolbellup Community School and the Coolbellup Learning Centre.

The P&C consists of individual parents and carers of students enrolled in both schools. We also have a representative from the Coolbellup Community Association on the committee. This helps to strengthen our relationships within our wider community and gives us opportunities to collaborate on community events.

Anyone can join the P&C at any time during the school year. The annual joining fee is \$1 which is paid when you attend your first meeting.

.....